

**Drinkware
and
foodware**



GIFTS THAT GIVE BACK

- 785 million people - 1 in 9 - lack access to safe water. We are supporting Water.org to change this.
- For each CHANGE bottle sold, **3% of sales is donated** by the brand owners to Water.org to save lives with safe water and sanitation.



READY STOCK

- 3% of sales proceeds of each product committed to Water.org
- 8 hours hot, 24 hours cold
- Sustainable water bottle and packaging
- Elegant silicone loop for easy carrying
- 600ml capacity
- Scandinavian design

NEBRA

DWHL 516 - Black DWHL 517 - White DWHL 518 - Grey DWHL 519 - Navy Blue

Hans Larsen® Hans Larsen® Nebra Vacuum Insulated Water Bottle is part of the CHANGE Collection, and as a result, contributes to Water.org - a global NGO that provides millions with access to safe water and sanitation. By giving to Water.org, you are giving a GIFT THAT GIVES BACK. Nebra is double walled, leakproof, has a carry loop, stainless steel reusable water bottle with 8 hours hot, and 24 hours cold storage. Scandinavian design. Content: 600ml. Packed in a stylish recycled box that educates about making the Change from single-use to reusable products.

Print Technique : DM

Print Technique : UV, SC, ENG

Product size : ø7.5 X 23 cm

Preferred Print Location : Top of Lid

Preferred Print Location : Front

Packing Details : 51.5 x 32 x 26 cm ; 24 pcs /carton ; gw/nw: 9 kg / carton

Max Print Size : ø50 mm

Max Print Size : (Flat) 140 x 25 mm (Round) 140 x 230 mm



Blue

Grey

White

Green

Aqua Green



Black

READY STOCK

STAINLESS STEEL BOTTLE WITH BAMBOO LID

QUALITY

- Double-Walled water bottle
- SS 304 Inside, SS 201 Outside
- 560 ml Capacity
- Vibrant Colors
- High quality
- 3% of sales proceeds of each product committed to Water.org
- 24 hours cold, 8 hours hot

GIFTS THAT GIVE BACK

- 💧 785 million people - 1 in 9 - lack access to safe water. We are supporting Water.org to change this.
- 💧 For each CHANGE bottle sold, **3% of sales is donated** by the brand owners to Water.org to save lives with safe water and sanitation.



BREDA

DWHL 337 - Black DWHL 338 - White DWHL 339 - Grey DWHL 340 - Blue DWHL 343 - Green DWHL 344 - Aqua Green

Hans Larsen™ Breda is part of Hans Larsen CHANGE. Collection. Proudly use this bottle knowing that you have made a Change in someone's life through our contribution to water.org.

Print Technique : ENG, UV, SC
Product Size: ø7 x 24.5 cm

Preferred Print Location : Front & Top Max Print Size : (Front) 120 x 25 mm (Top) ø 40 mm
Packing Details: 39.5 X 39.5 X 28.5 cms ; 25 pcs / carton ; gw / nw : 9.5 / 7.5 kg / carton



QUALITY



READY STOCK

STAINLESS STEEL TUMBLER WITH METAL STRAW

- > 3% of sales proceeds of each product committed to Water.org
- > 15 hours cold, 5 hours hot
- > High-end Tumbler with flexible straw
- > Straw Cleaner in high quality stainless steel included
- > 540 ml Capacity
- > Double-Walled
- > SS 304 Inside, SS 201 Outside

GIFTS THAT GIVE BACK

- 💧 785 million people - 1 in 9 - lack access to safe water. We are supporting Water.org to change this.
- 💧 For each CHANGE tumbler sold, **3% of sales is donated** by the brand owners to Water.org to save lives with safe water and sanitation.



BORCULO

DWHL 331 - Black DWHL 332 - White

Hans Larsen™ Borculo Vacuum Insulated Tumbler with Reusable Straw is part of the CHANGE Collection, and as a result, contributes to Water.org - a global NGO that provides millions with access to safe water and sanitation. By giving to Water.org, you are giving a GIFT THAT GIVES BACK. Borculo is double walled, leakproof, stainless steel reusable coffee tumbler with 5 hours hot, and 15 hours cold storage. Scandinavian design. Includes a reusable straw with a straw cleaner. Content: 540ml. Packed in a stylish recycled box that educates about making the Change from single-use to reusable products.

Print Technique : ENG, UV, SC

Preferred Print Location : (Colored Front) (Steel Front) Max Print Size : (Colored Front) 100 x 25 mm (Steel Front) 30 x 25 mm

Product Size: ø8 x 17 cm

Packing Details : 57 X 34 X 25 cms ; 30 pcs / carton ; gw / nw : 10.9 / 8.6 kg / carton



- > Stainless Steel Water Bottle
- > SS 304 Inside, SS 201 Outside
- > Double Walled Vacuum
- > 24 Hours Cold & 8 Hours Hot
- > Leak Proof
- > Screw-On Cap; BPA Free
- > 500 ml Capacity

READY STOCK



Black

White



GIFTS THAT GIVE BACK

- 785 million people - 1 in 9 - lack access to safe water. We are supporting Water.org to change this.
- For each CHANGE bottle sold, **3% of sales is donated** by the brand owners to Water.org to save lives with safe water and sanitation.



HUNFELD

DWHL 280 - Black DWHL 281 - White

Hans Larsen™ CHANGE Double Walled Stainless Steel Vacuum Water Bottle (500ml). This bottle makes an impact by supporting Water.org to provide safe water to people in need with every purchase. Packed in an elegant recycled gift box.

Print Technique : UV, SC, ENG
Product size : ø 6.8 x 26 cm

Preferred Print Location : Front

Max Print Size : 110 X 20 mm

Packing Details : 45 x 30.5 x 28.4 cm ; 24 pcs /carton ; gw/nw: 6.5/8 kg/ carton

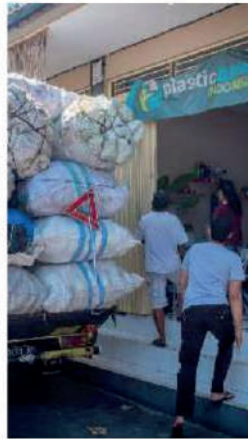
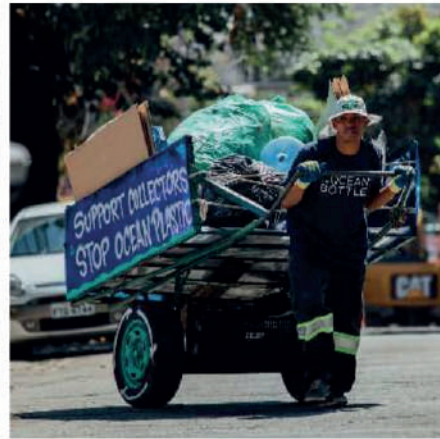
1 ocean bottle = 1000 Ocean - Bound Plastic Bottles Collected



SMALL BOTTLE
**BIG
IMPACT**



By 2050, plastic
in the oceans will
outweigh fish



"Ocean bottle is the first tangible ocean impact we have"

London
**Evening
Standard**

"If Apple designed a drinks container for life, this would be it."


THE TIMES

"Fighting plastic pollution at a grassroots level"

Forbes



OUR HERO PRODUCT & AWARDS

Made from **insulated stainless steel** and **recycled ocean bound plastic**.

Designed in Norway by award winning **K8 Industridesign**, developing the bottle from user insight all the way to our **award winning** final product.



Recycled ocean-bound plastic base



MORE THAN JUST A BOTTLE

Value add benefits

- Each Ocean Bottle funds the collection of **1000 ocean-bound plastic bottles** in weight & improves social mobility
- Receive **collector** stories and **content**
- Company plastic collection **impact certificate**
- **Co-founder talks** or panel for your audience
- **PR support** with messaging and communications
- **Branding opportunity** on merchandise
- Each Ocean Bottle is entirely **carbon neutral**, offsetting **4.88kg of carbon** (per unit sold)



Social Enterprise UK
Certified Member

1 FOR 1000 // 1 FOR 1000 // 1 FOR 1000 // 1 FOR 1000 // 1 FOR 1000 // 1 FOR 1000 // 1 FOR 1000 //

SOCIAL IMPACT

We work with individuals all over the world, wherever plastic pollution is worst, to stop the flow at its source.

Collectors exchange plastic for **money** and get access to **social resources** such as **healthcare, education, mental health support** and **financial security**

All enabled by our network of plastic collection partners.





SERIOUSLY SUSTAINABLE DRINKWARE

Corporate's Certificate (example)

CERTIFICATE OF SOCIAL PLASTIC COLLECTION

PROUDLY AWARDED TO
EXAMPLE COMPANY



FOR PREVENTING
46,609 KGS
FROM ENTERING OUR OCEAN.

POWERED BY IBM BLOCKCHAIN+


ISO 17033 Ethical Claims Verified
26000 Social Responsibility Verified
SEDEX Compliant

IMPACT
CERTIFICATE

READY STOCK


Will Pearson
CEO & Co-Founder


Nick Doman
COO & Co-Founder

January 2021
www.oceanbottle.co
[@oceanbottle](https://twitter.com/oceanbottle)

SUSTAINABLE FROM THE START

- Our packaging is **FSC certified, recycled** and **recyclable**
- **Designed to ship** without the need for useless plastic sleeves
- Interactive packaging that tells the brand and product mission.
- Customisable





ORACLE
Red Bull 
RACING

WHY OCEAN BOTTLE?

• Oracle Red Bull Racing utilised Ocean Bottle to create a world leading plastic Corporate Social Responsibility programme in line with their carbon reduction and offset schemes



COMPANY GIFTING



24,000,000
PLASTIC BOTTLES COLLECTED



23,936
OCEAN BOTTLES PURCHASED



272,000
KGS OF OCEAN PLASTIC COLLECTED

webexone

WHY OCEAN BOTTLE?

- Used Ocean Bottle Plastic Collection Certificates in Annual Report
- Used the Bottles as a communications tool to tell their Employees about the impact they created
- Shared OB's Welcome Pack with each recipient



COMPANY GIFTING



7,125,000
PLASTIC BOTTLES COLLECTED



7,125
OCEAN BOTTLES PURCHASED



81,225
KGS OF OCEAN PLASTIC COLLECTED



WHY OCEAN BOTTLE?

Mercedes-Benz Global HQ bought **4100 Ocean Bottles** for giveaways at their corporate events, such as their Golf Events & their track driving days for **prospective clients**

Events Include:

- Ladies Business Cup
- AWGC Tour
- Mercedes Trophy Golf
- Mercedes-AMG Track days



COMPANY GIFTING



4,100,000
PLASTIC BOTTLES COLLECTED



4,100
OCEAN BOTTLES PURCHASED



46,740
KGS OF OCEAN PLASTIC COLLECTED





SERIOUSLY SUSTAINABLE FLASK

EACH BREW FLASK FUNDS THE **COLLECTION OF 1,000 PLASTIC BOTTLES, 11.4KGS OF PLASTIC.**

EASY SWAP LID - If you have an Ocean Bottle you can swap the Brew lid with the Original to suit different needs and occasions

KEEPS STUFF HOT - Thermal lid and double-insulation keep drinks how you like them up to 6 hours

TWIST TO LOCK LID - The simple 180 twist lid mechanic means you can seamlessly lock the lid or unlock it

360 LID LETS DRINKS FLOW - Feels like drinking from your favourite cup and lets the coffee flow and circulate

NFC ENABLED - So you can collect more plastic every time you refill

LEAK PROOF - Leak-free lid and sweat-free surface keep wet stuff safely on the inside

LASTS A LIFETIME - designed for durability, recyclable 'til the end



READY STOCK



Coffee on the go never tasted so good.

Brew is designed to be the only drink companion you need when you're on the **go**.

With a **360° lid**, it feels like you're drinking from your favourite cup, and let's the coffee flow and aromas circulate.

Our brew flasks are made from **99%** recycled stainless steel double wall vacuum-insulated recycled materials, won't leak or sweat in your bag and are **100%** dishwasher safe - all while helping to **save the ocean**, every Brew funds the collection of **1000 plastic bottles**.

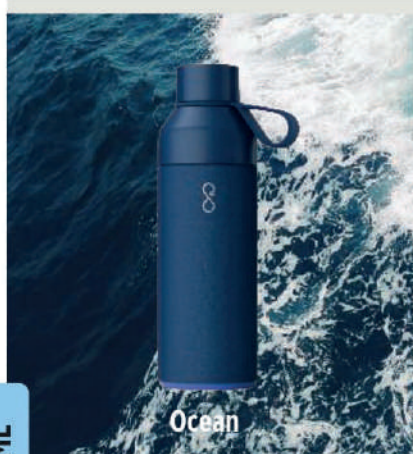


Social Enterprise UK
Certified Member

ocean
bottle



SERIOUSLY SUSTAINABLE DRINKWARE



Ocean



Rock

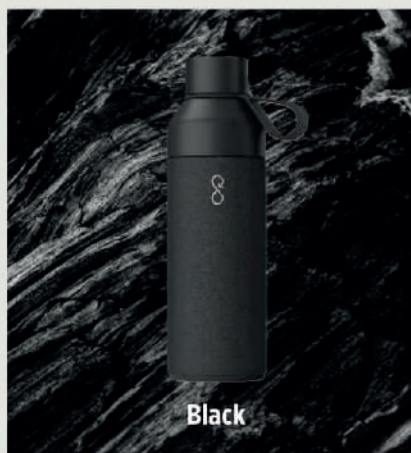


Forest

500 ML



Sky



Black



Sun

READY STOCK

Scan Below QR code to watch product video



BESPOKE EXAMPLE



- > Reusable bottle that funds the collection of 1000 plastic bottles in weight
- > Dishwasher safe
- > 180° twist anti-leak lid with dual opening for drinking and easy cleaning
- > Vacuum stainless steel insulation keeping hot things hot and cold things cold
- > Ice, coffee, tea, juice, smoothies, still and sparkling water — it's all good

OCEAN BOTTLE

DWOB 291 - Black DWOB 292 - Ocean DWOB 293 - Sun DWOB 294 - Sky DWOB 295 - Forest DWOB 296 - Rock

Our original award-winning 500ml Ocean Bottle keeps cold drinks cold, and hot drinks hot. Made from double wall vacuum-insulated stainless steel and recycled content. The anti-leak dual opening lid makes filling and cleaning a breeze. Plus, unlike most reusable bottles, Ocean Bottle is 100% dishwasher safe.

Available in six colours: Ocean Blue, Rock Grey, Sun Orange, Forest Green, Obsidian Black and Sky Blue.

Print Technique : SC, UV, ENG

Preferred Print Location : Front

Max Print Size : 120 X 25 mm

Product Size : 22 X ø 6.8 cm

Packing Details : 49 X 34 X 27 cm ; 24 pcs / carton ; gw / nw : 10 kg / carton



READY STOCK



- > Dual copper and vacuum insulation
- > 12 hours hot, 20 hours cold
- > Comes in 8 vibrant corporate colors
- > 500 ml capacity

Leak Proof Lid

COPPER VACUUM INSULATION
Copper plated inner wall for longer hours of enjoyment

12H

20H

NIESKY

DWGL 541 - Black DWHL 542 - White DWHL 543 - Navy Blue DWHL 544 - Aqua Blue DWHL 545 - Titanium DWHL 546 - Red
DWHL 547 - Purple DWHL 547 - Green

Giftology Double wall stainless steel with copper insulating vacuum bottle. Capacity 500 ml. Leak free. Perfect to keep your favourite drink hot for 12 hours or cold for 20 hours, wherever you go. Available in 8 vibrant colors

Print Technique : UV, SC, ENG

Preferred Print Location : Front

Max Print Size : (Flat) 30 x 90 mm; (Round) 220 x 90 mm

Product size : 26.7 X ø7.1 cm



STAINLESS STEEL SOFT TOUCH WATER BOTTLES

Giftology



750 ml



Black



White



Aqua Blue

TAUNUS

DWGL 3101 - Black DWGL 3102 - White DWGL 3103 - Aqua Blue

Giftology Double Walled Vacuum Insulated Stainless Steel Water Bottle with elegant soft touch coating. Leakproof lid. 5 hours hot / 15 hours cold. Capacity: 750ml

Print Technique : UV, SC, ENG

Preferred Print Location : Front

Max Print Size : (Flat) 175 X 25 mm; (Round) 175 X 245 mm

Product Size : 27.2 x ø7.8 cm

READY STOCK



1000 ml



Black



White

GRIGNY

DWGL 3113 - Black DWGL 3114 - White

Giftology Double Walled Vacuum Insulated Stainless Steel Water Bottle with elegant soft touch coating. Leakproof lid. Capacity: 1000ml

Print Technique : UV, SC, ENG

Preferred Print Location : Front

Max Print Size : (Flat) 30 X 205 mm; (Round) 260 X 205 mm

Product Size : 29.5 X ø8.3 cm



DOUBLE WALL STAINLESS STEEL WATER BOTTLE

Hans Larsen™



Black



White

- > Vacuum insulated with unique 100% gloss coating
- > 6 hours hot, 12 hours cold
- > 500ml capacity



SONTRA

DWHL 346 - Black DWHL 347 - White

Hans Larsen Sontra by Hans Larsen® is a double walled classic stainless steel water bottle with a unique 100% glossy coating for a unique look and feel. The bottle keeps chilled beverages cold for up to 12 hours and hot drinks warm for up to 6 hours. This bottle will keep you hydrated on the go wherever you are. Capacity 500ml, leakproof, SS 304 inside SS 201 outside. Packed in a gift box.

Print Technique : SC, UV, ENG
Product size : 26.7 X 07 cm

Preferred Print Location : Front

Max Print Size : 30 x 110 mm

Packing Details : 46 x 32 x 29 cm ; 24 pcs /carton ; gw/nw: 7.6 kg / carton

READY STOCK



- > This bottle is suited for round full color sublimation printing
- > Vacuum insulated with unique 100% gloss coating
- > 500ml capacity

SUBLIMATION



DWHL 348 - GERA

Hans Larsen The classic vacuum insulated stainless steel water bottle with a unique 100% glossy coating + possibility of all-around sublimation printing. The bottle keeps chilled beverages cold for up to 12 hours and hot drinks warm for up to 6 hours. This bottle will keep you hydrated on the go wherever you are. Capacity 500ml, Leakproof, SS 304 inside SS 201 outside. Packed in a gift box

Print Technique : SUBLIMATION
Product size : 26.7 X 07 cm

Preferred Print Location : Front

Max Print Size : (Round Sublimation) 110 x 220 mm

Packing Details : 47 x 32 x 29 cm ; 24 pcs /carton ; gw/nw: 7.6 kg / carton



Sun



Sky



Forest



Ocean



Rock



Black



Scan QR code to watch product video



A HOT / COLD BEVERAGE CONTAINER FROM THE OCEAN BOTTLE FAMILY

- > Reusable Mug that funds the collection of 1000 plastic bottles in weight
- > Dishwasher safe
- > 360° twist anti-leak lid with for ultimate drinking convenience
- > Vacuum stainless steel insulation keeping hot things hot and cold things cold

READY STOCK

BREW

DWOB 3121 - Black DWOB 3122 - Ocean DWOB 3123 - Sun DWOB 3124 - Sky DWOB 3125 - Forest DWOB 3126 - Rock

The new 350ml Ocean Bottle-BREW keeps cold drinks cold, and hot drinks hot. Made from double wall vacuum-insulated stainless steel and recycled content.

The anti-leak dual opening lid makes filling and cleaning a breeze. Plus, unlike most reusable Flasks/Mugs, Ocean Bottle is 100% dishwasher safe.

Available in six colours: Ocean Blue, Rock Grey, Sun Orange, Forest Green, Obsidian Black and Sky Blue.

Print Technique : SC, UV, ENG

Preferred Print Location : Front

Max Print Size: 115 X 25 mm

Product Size : 17 X ø6.8 cm



READY STOCK



450 ml

- > SS 304 Inside, SS 201 Outside
- > Easy Grip, Flat Sides
- > Wide Mouth Fits Ice Cube
- > 12 Hours Cold And 8 Hours Hot
- > Screw-On Cap; BPA Free



GALATI

DWHL 401 - Black DWHL 402 - White DWHL 403 - Copper DWHL 404 - Grey DWHL 406 - Blue

Hans Larsen™ Galati is the only Stainless Steel reusable water bottle that you will ever need. This water bottle keeps liquids cold for up to 12 hours and hot for upto 8 hours without any sweating on the exterior; plus, a wide-mouth opening allows ice to easily go in and flat-sides offers a secure grip for every sip. Capacity: 450 ml

Print Technique : UV, SC, ENG

Preferred Print Location : Front

Max Print Size : 30 x 120mm

Product Size : 24 x ø7 cm

Packing Details : 54 X 48 X 28 cms ; 30 pcs / carton ; gw / nw : 12 kg / carton



- > 650ml Stainless Steel Bottle
- > Unique Lid With Drink Reminder
- > Leak Proof



DWXD 817 - AQUA

XDDDESIGN Track your daily hydration goals with this smart designed stainless steel 650ml. water bottle. The lid displays a bigger water drop each time you refill and twist the collar so you can easily keep count of the number of bottles you drink. Handwash only and leakproof. Registered design®

Print Technique : UV, SC, ENG Preferred Print Location : Front
Max Print Size : (Flat) 30 x 100 mm (Round) 200 x 100 mm Product Size : 20.9 x ø7 cm
Packing Details : 26.5 x 31 x 46 cm; 24pc /carton; gw/nw: 5.76 kg / carton

READY STOCK



NEVA
STAINLESS STEEL
WATER BOTTLE



500 ml



DWXD 614 - NEVA

XDDDESIGN Neva is an alternative in the battle against disposable plastic water bottles. Thanks to the 500 ml body made in durable 304 stainless steel, Neva can be your everyday bottle. The fabric strap allows you to carry the bottle while also serving as a quick release for the leak proof spout. Registered design®

Print Technique : ENG, SC, UV Preferred Print Location : Center Max Print Size : (Flat) 25 x 80 mm, 180 x 120 (Round)
Product Size : 22 x ø6.2 cm Packing Details : 26 x 47 x 61 cm; 48pcs /carton; gw/nw : 10.9 kg / carton



Black



Designed by:



Ryan McSorley
Ireland



reddot design
award winner



UI 1270 - BOPP MINI

XDDDESIGN Bopp Mini is a compact 350ml bottle with a matt body and with attached carabiner that makes it easy to clip onto your bag, belt or other gear you take with you. Registered design®

Print Technique : UV, SC, ENG Print Location : Front Down
Max Print Size : (Flat) 25 x 90 mm (Round) 180 x 50 mm
Product Size : 18.0 x ø6.4 cm
Packing Details : 48 x 37x 43 cm; 60 pcs /carton; gw/nw: 12 kg / carton



Blue





Stay Hydrated On-The-Go



READY STOCK



Black



- ▶ Vacuum Insulated S.S. bottle
- ▶ Cold for 10 hours, Hot for 5 hours 500 ml Capacity
- ▶ Double Walled Leakproof
- ▶ SS 304 inside SS 201 outside
- ▶ Elegant Soft Touch



Navy Blue



Grey



White



Green

GRODNO

DWGL 365 - Black DWGL 366 - White DWGL 367 - Grey DWGL 368 - Navy Blue DWGL 369 - Green

Rubberized solid colour vacuum insulated stainless steel bottle. The bottle keeps chilled beverages cold for up to 10 hours and hot drinks warm for up to 5 hours. This bottle will keep you hydrated on the go wherever you are. Capacity 500ml, Leakproof, SS 304 inside SS 201 outside

Print Technique : UV, SC, ENG

Preferred Print Location : Front

Max Print Size : 30 x 70mm

Product Size : 26 x ø7 cm

Packing Details : 77.5 X 40 X 30 cms ; 50 pcs / carton ; gw / nw : 17/14 kgs / carton



DOUBLE WALL STAINLESS STEEL WATER BOTTLE



Giftology

- Vacuum Insulated
- SS 304 Inside
- SS 201 Outside
- Elegant Soft-touch Exterior



Black

1000 ml



White

VALENCE

DWGL 3111 - Black DWGL 3112 - White

Giftology Double Walled Vacuum Insulated Stainless Steel Water Bottle with elegant soft touch coating. Leakproof lid. Capacity: 1000ml - Large.

Print Technique : UV, SC, ENG

Preferred Print Location : Front

Max Print Size : (Flat) 160 X 30 mm; (Round) 160 X 283 mm

Product Size : 32.7 x ø9 cm

READY STOCK



Hans Larsen™

- Stunning all over wood prints on bottle
- 5 hours hot, 15 hours cold
- 500ml capacity



Light Wood Print

500 ml



Dark Wood Print

GEYER

DWHL 408 - Dark Wood Print DWHL 409 - Light Wood Print

Hans Larsen® This sleek looking leakproof vacuum insulated stainless steel water bottle will keep you hydrated on the go wherever you are. The all over wood print on the body makes the bottle a real eye catcher. The bottle keeps chilled beverages cold for up to 15 hours and hot drinks warm for up to 5 hours. Capacity 500ml. BPA free.

Print Technique : ENG

Preferred Print Location : Front

Max Print Size : (Flat) 25 X 130 mm; (Round) 220 X 130 mm

Product Size : 26.7 x ø7cm

Packing Details : 41 x 41 x 30.5 cm; 25 pcs /carton; gw/nw: 9.5/7.5 kg / carton



500 ml

READY STOCK

- Borosilicate glass bottle with carry handle
- Sleeve added for safety and extra insulation
- 500ml capacity
- Eco Bamboo Top



FLOHA

DWHL 352 - Black DWHL 353 - White DWHL 354 - Jute DWHL 355 - Royal Blue DWHL 356 - Green

Hans Larsen® Floha is a borosilicate glass bottle with a bamboo lid + handle, with a color sleeve. Capacity: 500ml

(Bottle) Print Technique : UV, SC, ENG

Preferred Print Location : On Top

Max Print Size : ø54 mm

(Sleeve) Print Technique : UV, SC

Preferred Print Location : On Sleeve

Max Print Size : (Flat) 155 x 20 mm

Product Size : 24 x ø7.1 cm



- > Made from borosilicate glass to hold hot and cold liquids
- > Glass decanter with cork lid
- > Contemporary design
- > 600ml capacity



600 ml



DWEN 362 - BERKA

eco-neutral Borosilicate glass bottle with a cork lid. Store your fresh made juices, water or other drinks in this glass bottle. Because it is made from borosilicate glass, it can also hold hot liquids. The cork lid gives the decanter a natural look. Capacity: 600 ml.
 Print Technique : UV, SC Preferred Print Location : Front
 Max Print Size : (Flat) 150 X 25 mm (Round) 223 X 150 mm
 Product Size : 23 x ø7.1 cm



- > Made from borosilicate glass to hold hot and cold liquids
- > Glass decanter with cork lid
- > Contemporary design
- > 1000ml capacity



1000 ml



DWEN 363 - DELLACH

eco-neutral Borosilicate glass bottle with a cork lid. Store your fresh made juices, water or other drinks in this glass bottle. Because it is made from borosilicate glass, it can also hold hot liquids. The cork lid gives the decanter a natural look. Capacity: 1L.
 Print Technique : UV, SC Preferred Print Location : Front
 Max Print Size : (Flat) 190 X 30 mm (Round) 267 X 190 mm
 Product Size : 29.4 x ø8.5 cm



ECO FRIENDLY GLASS WATER BOTTLES



- Glass Inside
- ECO Wheat Straw Exterior
- Phone Stand
- 380 ml Bottle with carry handle



Mobile Stand

DWGL 361 - RABI

eco-neutral Eco Friendly water bottle with glass interior and wheat straw exterior. With convenient handle for easy carrying and a phone stand at the base. Capacity 380ml. BPA free. Packed in a gift box.

Print Technique : UV, SC, ENG
Product Size : 21 x ø6.3cm

Preferred Print Location : Front

Max Print Size : (Flat)30 X 100 mm; (Round) 100 X 190 mm
Packing Details : 56 x 35.5 x 23.5 cm; 40 pcs /carton ; gw/nw: 13/12 kg / carton

READY STOCK



GRUENE

DWMK 101 - White

420ml capacity glass bottle with protective neoprene sleeve in bright tones. With screw-on safety cap and carrying belt.

Print Technique : SC, UV Preferred Print Location : All over
Max Print Size : 60 x 50 mm Product Size : 19 x ø6.4 cm

Packing Details : 40 x 37 x 37cms; 50pc /carton; gw/nw: 14 kg / carton



Hans Larsen™



- Made From Borosilicate Glass
- 500 ml; Heat Resistant
- Sleeve Included For Drop Protection



DWHL 351 - BRASOV

Hans Larsen™ Time to purify your lifestyle, and change the way you drink water. Glass is 100% recyclable and doesn't contain harmful chemicals or unwanted flavours into your water like plastic or metal. Brasov water bottle is reusable and is entirely BPA free, lead free and worry free. Made from high borosilicate glass, which is more heat resistant than any other commonly used glass. With fashionable sleeve for drop protection and heat insulation. Content 500 ml.

Print Technique : SC, UV Preferred Print Location : Bottle
Max Print Size : (Flat) 25 x 120 mm, (Round) 70 x 120 mm Product Size : 21.6x ø6.7 cm
Packing Details : 49 x 33 x 26.5 cm; 24pc /carton; gw/nw: 11 kg / carton



Hans Larsen™
Premium Drinkware



Made from natural fast growing bamboo and 100% recyclable borosilicate glass, this reusable bottle is designed to support the environment.

READY STOCK



- > Borosilicate Glass Body & Eco Bamboo Top Cap
- > Silicon Sleeve For Protection
- > Eco-Friendly !!



DWHL 502 – MEGARA

Hans Larsen Megara is made from glass that is 100% recyclable and that doesn't infuse harmful chemicals or unwanted flavours into your water like plastic or metal and eco-friendly bamboo lid. Made from high grade borosilicate glass, which is more heat resistant than any other commonly used glass. Now you can save the planet and enjoy your warm tea too. With fashionable silicone sleeve for drop protection and heat insulation. Content 550ml.

Print Technique : UV, SC, ENG

Preferred Print Location : Top Max Print Size : 45 x 40 mm

Product Size : 24 x ø6.8 cm

Packing Details : 49 X 33 X 26 cm; 24 pcs/carton; gw/nw: 14.5 kg/carton



READY STOCK



- Unique dual lid mechanism
- Inbuilt straw and lid options
- 1L capacity with sturdy carry handle
- Premium powder coated finish

1000 ml

DWHL 3105 - USLAR

Hans Larsen The ultimate stainless steel bottle for on-the-go versatility. The lid has a dual function that has both a flip top straw and screw cap so you can choose how you want to drink from the bottle! The bottles features a large top handle for easy carrying. Double wall vacuum insulated stainless steel keeps beverages hot for up to 5 hours or cold for up to 15 hours. A powder coat finish creates a highly durable and premium exterior. Capacity 1000ml. BPA free.

Print Technique : UV, SC, ENG
 Product Size : 27.2 x 11 x 9.8 cm

Preferred Print Location : Front

Max Print Size : (SC) 90 X 100 mm (ENG & UV) 26 X 100 mm



Hans Larssen™
Drinkware



- TRITAN™ Body
- 800ml ; Leak Proof
- Single Hand Operation

DWHL 506 – BATUMI

Hans Larssen™ Trendy infuser bottle to flavour your water with your favourite fruit or herbs. The body is made out of TRITAN™ material so it is scratch proof and durable. The lid is made out of ABS and is leakproof so you can take your flavoured water wherever you go. Capacity 800 ml.

Print Technique : UV, SC Preferred Print Location : Front
 Max Print Size : (Round) 33 x 160 mm (Flat) 220 x 150 mm
 Product Size : 27.9 x ø7.6 cm
 Packing Details : 47 x 32 x 59.5 cm ; 50pc / carton; gw/nw: 14 kg / carton

Tacx

BIO BOTTLES MADE IN THE NETHERLANDS



- Food Approved, Free Of BPA And Phthalates
- Dishwasher Safe
- Recyclable Plastic
- 20% Post Industrial Recycled Plastics
- All Caps Are Fitted With Lockable Pull Lids
- Easy To Squeeze; Made From Soft Plastics
- Large Opening, Easy To Clean
- Dutch Design

READY STOCK



FUSE

DWTX 501 - Black DWTX 502 - Light Blue DWTX 503 - Dark Blue DWTX 504 - Red

Tacx The Fuse bottle is a squeezable elegant life style bottle with a fruit fusion stick. Add taste and vitamins to your water by threading pieces of fruit or herbs onto the fruit fusion stick. The bottle holds 450cc, is made from soft squeezable BPA free polyethylene and has a pull lid for easy drinking. A carry on handle helps carry it around for various sports activities.

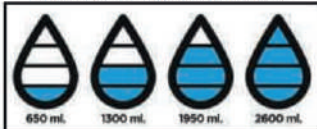
Print Technique : UV, SC Preferred Print Location : Front
 Max Print Size : 198 x 147 mm (Round) Product Size : 23 x ø6.4 cm
 Packing Details : 32.5 x 32.5 x 46.3 cm ; 50 pcs / carton ; gw/nw: 9.78 kg / carton



DRINKWARE



Unique Lid Displays Amount of Water Consumed & Re-filled For Easy Tracking



- 600ml Tritan Bottle
- Unique Lid With Drink Reminder
- Leak Proof



DW XD 827 - AQUA TRITAN

XDDESIGN Track your daily hydration goals with this cleverly designed 600 ml tritan water bottle. The lid displays a bigger water drop each time you refill and twist the collar so you can easily keep count of the number of bottles you drink. Handwash only & Leakproof.

Print Technique : UV, SC, DOM Preferred Print Location : Front
Max Print Size : (Flat) 25 x 80 mm (Round) 200 x 100 mm Product Size : 23 x ø7 cm
Packing Details : 26 x 32 x 47 cm ; 24pc /carton; gw/nw: 4.9 kg / carton



- 600ml Lockable Tritan Bottle
- Leak Proof
- Single Handed Operation



HYDRATE BOTTLE

DW XD 910- Transparent / Anthracite

XDXCLUSIVE™ Leak proof lockable tritan bottle with handle. Content: 600ml. Registered design*

Print Technique : UV, SC, Preferred Print Location : Front
Max Print Size : (Flat) 25 x 80 mm (Round) 200 x 100 mm Product Size : 23.4 x 7.2 cm
Packing Details : 27 x 26 x 59 cm ; 21pc /carton; gw/nw: 4.25 kg / carton

READY STOCK

Giftology



680 ml



DW GL 303 - AACHEN

Giftology 680ml water bottle with fruit infuser compartment. Infuse your water with fresh fruits and additional flavours into the infuser compartment. The infuser compartment can also be used to chill your water by adding ice cubes. Also prepares your detox water and enjoy the infusion.

Hans Larsen™ Drinkware



DW HL 216 - SWEL

Hans Larsen™ Swel is a 400ml protein shaker with Three compartments, first /top for liquid, second for vitamins, and third for protein powder. Made from BPA free materials and is leakproof. Carabiner allows easy clipping onto your belt loop or backpack.

Print Technique : SC Preferred Print Location : Front
Max Print Size : (Flat) 40 x 60 mm Product Size : 21.8 x ø9.5 cm
Packing Details : 53 x 53 x 33 cm; 50 pcs/carton; gw/nw: 11 kg/carton





XDXCLUSIVE® | ECO®

Squared Lockable Leak Proof Tritan Water Bottle



XDXCLUSIVE® | ECO®

Honeycomb Lockable Leak Proof Infuser Bottle



Transparent

Blue

Black

Locking Mechanism



Black

White

READY STOCK



- BPA FREE
- LEAK PROOF
- XDXCLUSIVE®
- Single Handed Operation
- 600 ml Leak Proof Bottle
- Locking Mechanism
- Silicone Border / Sleeve
- Tritan Bottle; BPA Free

SQUARED

DWXD 904 - Black DWXD 905 - Transparent DWXD 906 - Blue

XDXCLUSIVE® This unique shaped water bottle with silicone sleeved body allows convenient single-handed drinking. Push the button and the lid flips open. There's a special locking mechanism to keep users away from accidentally pressing the button. This water bottle is made of a durable and innovative tritan material. Odourless and 100% BPA-free. Content 600ml. Registered design®

Print Technique : SC, UV Preferred Print Location : All Sides
 Max Print Size : 40 x 50 mm Product Size : 20.7 x 8.8 x 5 cm
 Packing Details : 24 x 35 x 41.5 cm ; 24pc /carton ; gw/nw: 4.5 kg / carton

- BPA FREE
- LEAK PROOF
- XDXCLUSIVE®
- Single Hand Operation
- 700 ml Leak Proof Bottle
- BPA Free ; Tritan material
- Locking Mechanism
- Infuser

HONEYCOMB

DWXD 901 - Black DWXD 902 - White

XDXCLUSIVE® Add some healthy fruit flavours to your water. This designer bottle with honeycomb details offers convenient single-handed drinking. Push the button and the lid flips open. There's a special locking mechanism to keep users away from accidentally pressing the button. Including carrying handle. This infuser bottle is made of a durable and innovative tritan material. Odourless and 100% BPA-free. Content 700ml. Registered design®

Print Technique : SC, UV Preferred Print Location : Side
 Max Print Size : 30 x 40 mm Product Size : 24.8 x ø8.6 cm
 Packing Details : 28 x 36.5 x 53.5 cm ; 24pc /carton ; gw/nw: 5.5 kg / carton



VACUUM FLASKS & TUMBLER

READY STOCK



SWISS PEAK®



- > Copper Vacuum Construction
- > Powder Coated Finish
- > Double Wall 18/8 Grade Steel
- > Leak Proof
- > 8 Hrs Hot, 24 Hrs Cold

DWSW 102 - ELITE COPPER VACUUM FLASK, 0.5L

SWISS PEAK® The Swiss Peak Elite series are with vacuum insulation and double wall 18/8 grade stainless steel. The powder coated black colour is built to last! No fading or cracking here! The inner wall is plated with copper for ultimate conductivity to keep drinks hot for 8 hours and cold for 24 hours. Hand washable and leakproof. Content 500 ml.

Print Technique : UV, SC, ENG
Product Size : 25.5 X ø7.4 cm

Preferred Print Location : Front

Max Print Size : 30 X 110 mm

Packing Details : 55 x 27 x 34.5 cm ; 24 pcs / carton ; gw / nw : 13kg / carton

XDDESIGN®



300 ml

- > Trendy Geometric Design
- > Durable 201 Stainless Steel

DWXD 719 - MOSA TUMBLER

XDDESIGN® Mosa is a fashionable 300ml tumbler from durable 201 stainless steel with an inside PP lining. Registered design®

Print Technique : UV, SC, ENG

Preferred Print Location : Front Bottom

Max Print Size : (Flat) 25 x 50 mm (Round) 200 x 50 mm

Product Size : 15.5 x ø7 cm

Packing Details : 53 x 42 x 36 cm ; 60 pcs/carton ; gw/nw : 13.35 kg / carton

XDDESIGN®



500 ml

- > Trendy Geometric Design
- > Durable 201 Stainless Steel

DWXD 820 - MOSA FLASK

XDDESIGN® Mosa is a fashionable 500ml double wall vacuum flask in durable 201 stainless steel. The flask closes with a PP lid that can be used to enjoy your hot beverages. Registered design®

Print Technique : UV, SC, ENG

Preferred Print Location : Front Bottom

Max Print Size : (Flat) 25 x 80 mm (Round) 200 x 80 mm

Product Size : 23.5 x ø6.9 cm

Packing Details : 28.0 x 41.0 x 53.0 cm ; 30 pc ; 6pcs/carton ; gw/nw : 12.7 kg / carton

- > 500 ml Capacity
- > Top Part For Engraving Logo
- > Food Grade



Stainless Steel Vacuum Flask

DWHL 259 - EGALEO

Double walled Flask with capacity 500ml (gross), 470ml (net). Material - Stainless steel (SS 304 inner, SS 201 outer). Keeps drinks hot for 8 hours, cold for 12 hours. Food Grade

Print Technique : SC, UV, ENG

Preferred Print Location : Front & Top

Max Print Size : (Front) 60 x 50 mm (Top) ø45 mm

Product Size : ø6.5 x 22.5 cm

Packing Details : 73 X 37 X 25 cm ; 50 pcs / carton ; gw / nw : 15/14 kgs / carton



Black

480 ml



White

Tall mug with ECO Cork base

RASTATT

DWGL 3107 - Black DWGL 3108 - White

Giftology Double Walled Vacuum Insulated Stainless Steel Travel Coffee Mug with cork base. Capacity: 480ml

Print Technique : UV, SC, ENG

Preferred Print Location : Front

Max Print Size : (Flat) 140 X 25 mm; (Round) 140 X 250 mm

Product Size : 17.5 x ø8 cm

READY STOCK



Black

500 ml



Steel

Convenient carry handle

ECO Cork base

500 ml capacity

CREIL

DWGL 3109 - Black DWGL 3110 - Steel

Giftology Double Walled Vacuum Insulated Stainless Steel Water Bottle with carry handle and cork base. Capacity: 500ml

Print Technique : UV, SC, ENG

Preferred Print Location : Front

Max Print Size : (Flat) 140 X 30 mm; (Round) 140 X 220 mm

Product Size : 27.5 x ø7 cm



SERIOUSLY SUSTAINABLE FLASK

EACH BREW FLASK FUNDS THE **COLLECTION OF 1,000 PLASTIC BOTTLES, 11.4KGS OF PLASTIC.**

EASY SWAP LID - If you have an Ocean Bottle you can swap the Brew lid with the Original to suit different needs and occasions

KEEPS STUFF HOT - Thermal lid and double-insulation keep drinks how you like them up to 6 hours

TWIST TO LOCK LID - The simple 180 twist lid mechanic means you can seamlessly lock the lid or unlock it

360 LID LETS DRINKS FLOW - Feels like drinking from your favourite cup and lets the coffee flow and circulate

NFC ENABLED - So you can collect more plastic every time you refill

LEAK PROOF - Leak-free lid and sweat-free surface keep wet stuff safely on the inside

LASTS A LIFETIME - designed for durability, recyclable 'til the end



READY STOCK



Coffee on the go never tasted so good.

Brew is designed to be the only drink companion you need when you're on the **go**.

With a **360° lid**, it feels like you're drinking from your favourite cup, and let's the coffee flow and aromas circulate.

Our brew flasks are made from **99%** recycled stainless steel double wall vacuum-insulated recycled materials, won't leak or sweat in your bag and are **100%** dishwasher safe – all while helping to **save the ocean**, every Brew funds the collection of **1000 plastic bottles**.





TEMPERATURE DISPLAY STAINLESS STEEL FLASK

Giftology



White



Silver



Navy Blue



Black

READY STOCK

- Inside Temperature Display on lid
- Popular Design
- SS 304 Stainless Steel inside
- Food Grade
- 8 hours hot, 12 hours cold

500 ml



KOVEL

DWGL 3116 - Black DWGL 3117 - White DWGL 3118 - Silver DWGL 3119 - Navy Blue

Giftology Double Walled Vacuum Insulated Temperature Display Stainless Steel Flask with 8 hours hot and 12 hours cold. The temperature indicator on the lid displays the current temperature of the liquids inside. Capacity: 500ml

Print Technique : UV, SC, ENG

Preferred Print Location : Front

Max Print Size : (Flat) 190 X 25 mm; (Round) 190 X 204 mm

Product Size : 23.7 x ø6.5 cm



MUGS



BEVAGE

DWXD 811 - Black DWXD 815 - Silver

XDDESIGN With 8 cm height, this is the perfect double wall mug for your coffee machine. PP inner. Great for your Espressos and Cappuccinos. Easy twist spill proof lid. Hand washable only. Content 160ml. Registered design®

Print Technique : UV, SC, ENG Preferred Print Location : Front Max Print Size : 25 x 20 mm
Product Size : 10.0 x ø7.0 cm Packing Details : 26.0 x 34.0 x 54.5 cm ; 40pc /carton ; gw/nw: 6.16 kg / carton



Coffee to go tumbler without handle

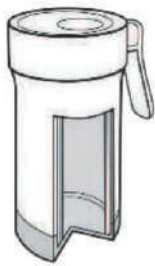


Coffee to go mug with handle

- > Convenient Small Size, 160ml Fits Most Coffee
- > Machines Spill-Proof Lid



XDDESIGN®



- > Double Walled ; 275 ml
- > Stylish & Trendy
- > Excellent Branding Space



POP MUG

DWXD 710 - Black DWXD 711 - White

XDDESIGN Pop is a fresh looking double wall plastic mug with frosted outside and sliding lid. 275ml content. Registered design®
Print Technique : SC, UV Preferred Print Location : Front Max Print Size : (Flat) 20 x 90 mm (Round) 185 x 70 mm
Product Size : 16.9 x 7.2 x 10.3 cm Packing Details : 42 x 69 x 39 cm ; 60 pcs/carton ; gw/nw : 14.5 kg/carton

READY STOCK

Hans Larsen™ Drinkware

* Image for representation purpose only. Do not try.

- > 470 ml Anti-Spill Mug
- > Leak Proof Design
- > Double Walled
- > Anti-Fall Suction Base



EJUNOIA

DWHL 205 - All White DWHL 206 - White-Blue Lid DWHL 207 - White-Grey Lid DWHL 208 - White-Black Lid

Hans Larsen 470 ml Double walled suction mug with outer body made from BPA free ABS and inside made from high grade stainless steel (SS 304) to ensure that your drink maintains its temperature for a long time. Strong vacuum suction pad at the bottom ensures that the mug holds firmly to the surface on which it is placed. Never worry about the drink spilling on to your table because it does not fall! Leakproof lid allows you to keep the mug in the bag, on your car seat, anywhere!

Print Technique : UV, SC Preferred Print Location : Center Max Print Size : (Flat) 30 x 140 mm, 160 x 32 mm (Round)
Product Size : 22 x ø8.5 cm Packing Details : 45.5 x 45.5 x 24.5 cm ; 25 pcs/carton ; gw/nw: 10 kg/carton



ECO & DESIGNER MUGS

Hans Larsen™
Premium Drinkware

Black



Double Wall Stainless Steel Tumbler / Mug

Designed To Fit Coffee Machines

Hot: 5 Hrs. Cold: 15 Hrs

White



Grey



GOUDA

DWHL 508 - Black DWHL 510 - White DWHL 511 - Grey

Hans Larsen® Vacuum insulated cork coffee mug with unique cork detail 304 SS inside and 201SS outside. Keeps your drinks hot for up to 5h and cold up to 15h. Fits most coffee machines. Content: 180ml.

Print Technique : UV, SC, ENG

Preferred Print Location : Front

Max Print Size : 30 X 60 mm (Flat) 200 X 50 mm (Round)

Product Size : 10 X ø7.2 cm

Packing Details : 57 X 34 X 25 cm ; 56 pcs / carton ; gw / nw : 10.1 kg / 8.1 carton

READY STOCK

XDDDESIGN™



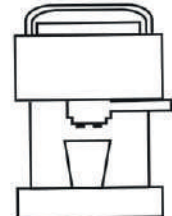
Red



Scan Below QR code to watch product video



Lime



✓ Your ideal coffee partner

227 ml; Double Walled

Easy To Clean

Leak Proof

Fits Under Your Coffee Machine

DIA

DWXD 503 - Red DWXD 505 - Lime

XDDDESIGN® Closable, insulated and compact enough for under the coffee machine (227 ml). It is also very hygienic because the lining of the mug is made of stainless steel and not from plastic. Designed to be completely dismantled at the end of its life-cycle. Registered design®

Print Technique : UV, SC, ENG

Preferred Print Location : Center

Max Print Size : (Flat) 25 x 60 mm , 170 x 60 mm (Round)

Product Size : 8.5 x 9.2 x 10.2 cm

Packing Details : 54 x 40 x 39.5 cm ; 50 pcs / carton ; gw/nw : 13.7 kg / carton

XDDDESIGN™



Orange



Designed by :



Antoine
France



Lime

Fresh Colors

Designer Drinking Mug

UI 1261 - URBAN

XDDDESIGN® Urban is a 400ml metal exterior mug which is ideal to use on your desk and to enjoy your coffee or tea. Stainless steel exterior has young & rich colors to add to the experience. Keeps your drink Hot for 3 Hrs & Cold for 6 Hrs. Registered design®

Print Technique : UV, SC

Preferred Print Location : Center

Max Print Size : (Flat) 30 x 70 mm

Product Size : 15.5 x 8.0 x 11.5 cm

Packing Details : 55.5 x 51.5 x 39 cm ; 40 pcs / carton ; gw/nw : 12.1 kg / carton

ECO & DESIGNER MUGS



- 280ml Leak Proof Vacuum Tumbler
- 5 Hours Hot And 15 Hours Cold



SIERRA

DW XD 913- Black/ Anthracite DW XD 914- Silver / Black

XD XCLUSIVE Just the right size, a perfect fit for most coffee machines. This vacuum insulated double wall stainless steel design tumbler with silicone band detail. Keeps your drink hot for up to 5 hours and cold for up to 15 hours. Content: 280ml. Registered design*

Print Technique : UV, SC, ENG

Preferred Print Location : Front

Max Print Size : (Flat) 25 x 60 mm (Round) 200 x 80 mm

Product Size : 13.7 x 7.3 cm

Packing Details : 31 x 41 x 41 cm ; 50pc /carton; gw/nw : 10.25 kg / carton



- 500ml Leakproof Vacuum Tumbler
- Ceramic Coated Inner Wall
- 5 Hours Hot And 15 Hours Cold
- Ceramic Coating Prevents Foul Odour



BOGOTA

DW XD 915 - Black

XD XCLUSIVE Don't taste your mug, just taste your drink! Enjoy this ceramic drinking experience. Keeps your drink hot for up to 5 hours and cold for up to 15 hours with this vacuum insulated tumbler. A ceramic all-over coating has been applied on the inner wall in order to have a better drinking experience and eliminate the metallic taste. Leak proof lid. Content: 500ml. Registered design*

Print Technique : UV, SC, ENG

Preferred Print Location : Front

Max Print Size : (Flat) 25x 80 mm (Round) 200 x 100 mm

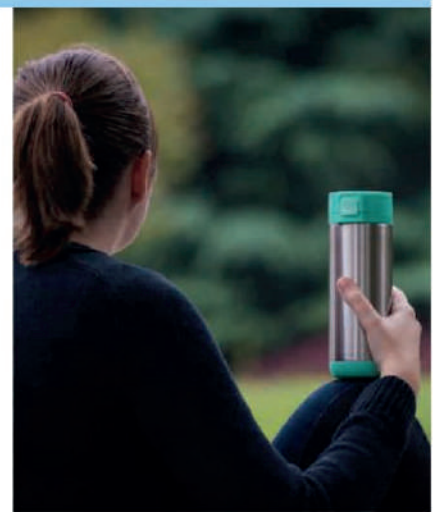
Product Size : 20 x ø7.1 cm

Packing Details : 23.5 x 40 x 48 cm; 30pc /carton; gw/nw: 9.1 kg/carton

READY STOCK



- 250 ml Leak Proof Mug
- One Hand Operation
- Lockable Lid
- Can Be Completely Disassembled By Recycling



LOCK MUG

DW XD 722 - Blue DW XD 723 - Green

XD DESIGN Lock allows you to safely drink and transport your drink to any location. The 250ml mug is easy to lock with one hand and made from durable 201 stainless steel with an inside PP lining. Designed in away that the mug is easy to take apart for recycling. Registered design*

Print Technique : UV, SC, ENG

Preferred Print Location : Front

Max Print Size : (Flat) 25 x 90 mm, (Round) 195 x 120

Product Size : 6.8 x 8.1 x 20 cm

Packing Details : 42 x 52.5 x 24.5 cm ; 30 pcs/carton; gw/nw : 2.5 kg / carton



AN INTELLIGENT MUG WARMER & PHONE WIRELESS CHARGER use @ home, in office.



READY STOCK



Reinforced Porcelain



Neither wireless charging nor heating coil switches on accidentally due to foreign objects



Ceramic Body

Press heating device: works by just placing the mug

Type C interface

- Material- High Temperature-Safe on touching while ON
- Continuous 8 hours working
- Mug 350ml
- Constant temperature 55°C
- Supports Qi standard wireless charging of phones incl. Apple & Android upto 10W.



Intelligent Foreign object Recognition identifies metal items that are accidentally place in panel



Wireless / Heating panel is waterproof

CRIVITS

ITHL 534 - WIRELESS CHARGER CUM CUP WARMER

Hans Larsen™ Works with own cup / mug only as effective contact points work in tandem with each other. This intelligent base recognises metal foreign objects placed accidentally and are not meant to be warmed or charged, Panel is waterproof & touch safe while on. The radio bottom cooling sheet dissipates heat at high temperature & accumulates heat when temperature is low, Mode of heating - wireless induction.

Print Technique : SC, UV

Print Location : Plate & Front of Mug Max Print Size : (Plate) 10 x 10 mm

Product Size : ø8.5 x 10.5 cm

Packing Details : 59 X 41 X 35 cm; 24 pcs/carton; gw/nw: 19.5/18.5 kgs /carton



Black

- > Gift Set with color matched items
- > All items with premium soft touch coating
- > Vacuum Bottle, Metal Pen and A5 notebook in gift box



White



Grey



Blue



READY STOCK

LAUTA

GSGL 861 - Black GSGL 862 - White GSGL 863 - Grey GSGL 864 - Blue

Giftology Gift set containing vacuum water bottle, pen and notebook - with matching color and premium soft touch feel.

Water bottle - Soft touch double walled vacuum insulated stainless steel water bottle with 5h hot & 10h cold - 500ml.

Pen - Soft touch metal pen with German Dokumental ink of 1200m writing length.

Notebook - Soft touch Hard Cover A5 notebook with 160 pages / 70GSM paper

(Bottle) Print Technique : UV, SC, ENG

Preferred Print Location : Front

Max Print Size : 30 X 70 mm

(Notebook) Print Technique : UV, SC, EMB

Preferred Print Location : Front

Max Print Size : 210 X 140 mm

(Pen) Print Technique : UV, SC, ENG

Preferred Print Location : Barrel

Max Print Size : 50 X 6 mm

Packing Details : 57 x 31 x 41 cm; 10 pcs /carton ; gw/nw: 8.5 kg / carton



READY STOCK

- > Contemporary dining table accessory
- > Matching cork / glass design
- > Sustainable tableware



GSHL 3106 - ZOSSEN

Hans Larsen Zossen is an elegant, must-have gift set for every home or office dining table - Set of durable borosilicate glass carafe jar with cork lid, with 2 matching borosilicate glass tumblers with cork base. Carafe Capacity: 1.8L and Tumbler Capacity: 240ml each.

Print Technique : UV, SC

Preferred Print Location : Front

Max Print Size : (Carafe) 160 X 30 mm; (Cups) 25 X 15 mm



READY STOCK



> Flask Capacity 600ml

> Tumbler Capacity 180ml

ALMELO

GSHL 102 - Black GSHL 103 - Silver

For a daily fix of coffee even when you are running late, and a much-needed water break when you are out doing something or the other, this Flask and Tumbler Gift Set comes in very handy. Perfect for wherever and whenever, this SS 304 insulated flask & tumbler series keeps cold drinks cool and hot drinks warm.

Print Technique : UV, SC, ENG

Preferred Print Location : Front

Max Print Size : (Flask) (Flat) 30 x 140 mm (Round) 200 x 140 mm

Max Print Size : (Tumbler) (Flat) 30 x 60 mm (Round) 200 x 60 mm

Product size : (Flask) 29 X ø7 cm (Tumbler) 10 X ø7.2 cm

Packing Details : 47 x 37 x 46 cm ; 10 pcs /carton ; gw/nw: 11/12 kg / carton



DRINKWARE SET

Hans Larsen™



READY STOCK



- > Elegant Design Premium Set
- > Water Bottle & Flask Set
- > Packed In A Stylish Box

GSHL 101 - LEIDEN

Hans Larsen™ Leiden is a drinkware set consisting of a Tritan water bottle and Stainless Steel Vacuum Tumbler made from SS 304 inside and SS 201 outside.

Capacity: each 510 ml/ 17 OZ . The silicon grip ensures easy carry. Packed in a nice and presentable gift box.

Print Technique : SC, UV, ENG Preferred Print Location : Front Max Print Size : 130 x 40 mm

Product Size: 22.8 x ø7.2 cm Packing Details: 59.5 x 42.3 x 43 cm; 20 pcs /carton; gw/nw: 11 kg / carton



READY STOCK



>> SS Water Bottle with easy Grip & Flat Sides

>> Pen With German Dokumental® Ink

>> Bottle, Notebook & Pen Set In Gift Box

>> 216 Pages Notebook With Legendary Flair

GSSN 101 - ARGAKI

SANTHOME Gift set consisting of a double wallet water bottle, pen and notebook. The water bottle keeps liquids cold for up to 12 hours and hot for 8 hours without any sweating on the exterior. Notebook is a retro piece of art that gels perfectly with the hexagonal body pen having German Dokumental® ink. A perfect gift that communicates modern flair.

(Notebook) Print Technique : SC, FO, UV, EMB

(Pen) Print Technique : SC, UV, ENG

(Bottle) Print Technique : UV, SC, ENG

Product Box Size : 28 X 25.5 X 9 cm

Preferred Print Location : Front

Preferred Print Location : Barrel

Preferred Print Location : Front

Packing Details : 66.5 X 55.5 X 29 cms ; 16 pcs / carton ; gw / nw : 16.3 kg / carton

Max Print Size : 160 x 100 mm

Max Print Size : 25 x 6 mm

Max Print Size : 30 x 120 mm



ECO GIFT SET

Useful eco-conscious gift set with sustainable packaging:

Notebook - Kraft cover with FSC-certified paper inside

Mug - Wheatstraw material with silicone sleeve

Pen - Made with wheatstraw material

VALUE

READY STOCK



Wheatstraw Mug w/ silicone



Notebook with FSC paper



Wheatstraw Pen

- All products plus packaging from sustainable materials
- Silicone sleeve helps hold mug with hot liquid
- 80 pgs Notebook - 14 x 9 cm, 70 gsm
- Give VALUE, Save Ecology when you give out this set
- 380 ml Mug capacity



GSEN 681 - KORGAN

(Notebook) Print Technique : SC, UV

(Pen) Print Technique : SC, UV

(Mug) Print Technique : SC

Box Size: 14.5 x 10.3 x 9.7 cm; Each set of 3 in box weighs 176 gms

Preferred Print Location : Front

Preferred Print Location : Clip

Preferred Print Location : Front

Max Print Size : 70 x 130 mm

Max Print Size : 7 x 35 mm

Max Print Size : 30 x 50 mm



READY STOCK



> Bamboo & Packaging-sustainable

Set of Eco Lunch Box & Vacuum Bottle
GSHL 180 – CHAVES

Hans Larsen (BOTTLE) Double wall stainless steel insulating vacuum flask with bamboo lid and carry handle. Capacity: 500 ml. Leak Proof Material- SS 304 Inside SS 201 Outside.
(LUNCH BOX) Stainless Steel lunchbox with bamboo lid and 2 cutlery utensils with attachable polyester band. Capacity 700ml. Bamboo is a natural product, there may be slight variations in colour and size per item. Material- SS 304 Food Grade

(BOTTLE) Print Technique : SC, UV, ENG Preferred Print Location : Bottle Front & Top
(LUNCH BOX) Print Technique : SC, ENG Preferred Print Location : Lunch Box Top & Side
Box Size : 25.5 x 25.5 x 7.5 cm; Box with both items weighs 715 gms

Max Print Size : (Front) 30 x 40 mm (Top) ø 45 mm
Max Print Size : (Top) 90 x 30 mm (Side) 30 x 100 mm